

Brateck

Engineered for pro-tier setups.

LDT46-C024E DUAL MONITOR ARM



The **LDT46-C024E** is a highly affordable dual mechanical spring-assisted monitor arm that brings premium ergonomics and flexibility to any workspace. Engineered for two 17" to 32" monitors (including curved screens) with a weight range of 2-9kg per display, this robust arm delivers full motion control through $\pm 90^\circ$ tilt, $\pm 90^\circ$ swivel, and 360° rotation, allowing perfect alignment for productivity, gaming, or collaborative work.

Robust Heavy-Duty Weight Capacity

Specially engineered to support massive displays, this premium arm easily holds two large monitors from 17" up to 35" (including curved screens), with an impressive weight capacity of up to 15kg (33lbs) per arm. It ensures zero sag for your ultimate command



High-Performance Spring-Assisted Mechanism

Equipped with a heavy-duty mechanical spring, this mount effortlessly counters the weight of heavy displays. It lets you float, raise, lower, and tilt your dual screens with a gentle touch to find your absolute perfect ergonomic height.



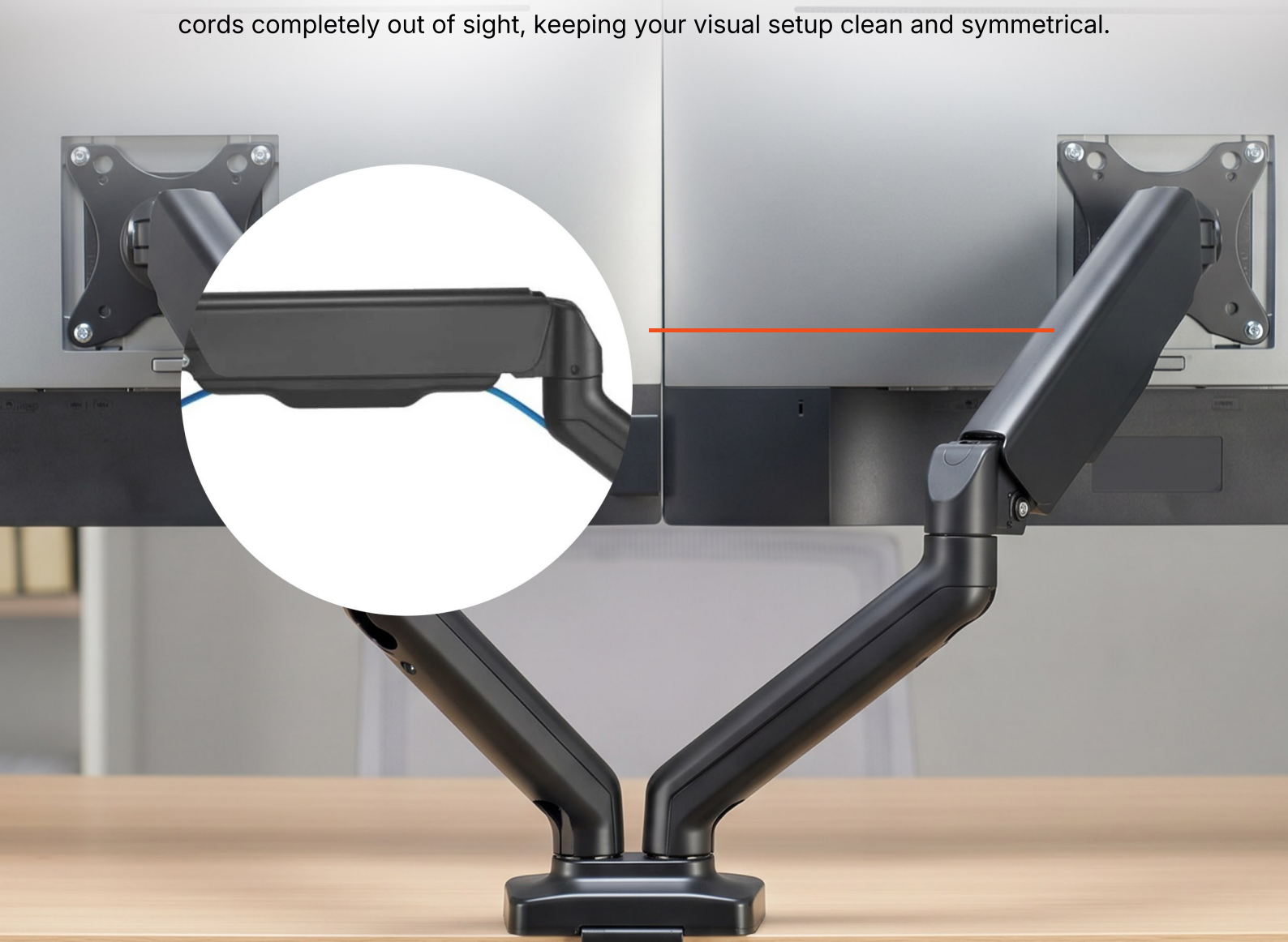
Integrated 180° Rotation Stop

Features a built-in rotation brake that limits the arm's rearward swing to 180 degrees. This prevents the heavy arms from slamming into adjacent walls, glass partitions, or neighboring office desks, making it perfect for flush-to-wall setups.



Slim Futuristic Aesthetic and Built-in Cable Routing

Boasting a sleek, sharp silhouette that complements modern workspaces, this arm features deeply integrated cable management channels. It hides thick power and display cords completely out of sight, keeping your visual setup clean and symmetrical.



**Steel, Aluminum,
Plastic**

Material

17"-32"

Fit Screen Size

36.9"×4.1"×22.4"

Dimensions

75×75, 100×100

VESA Compatible

2~9kg

Weight Capacity per screen

Matte Black

Color