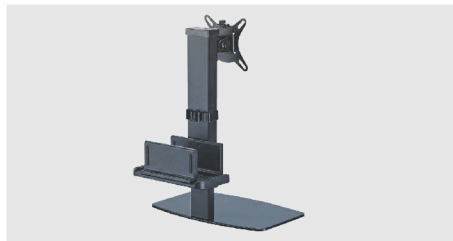
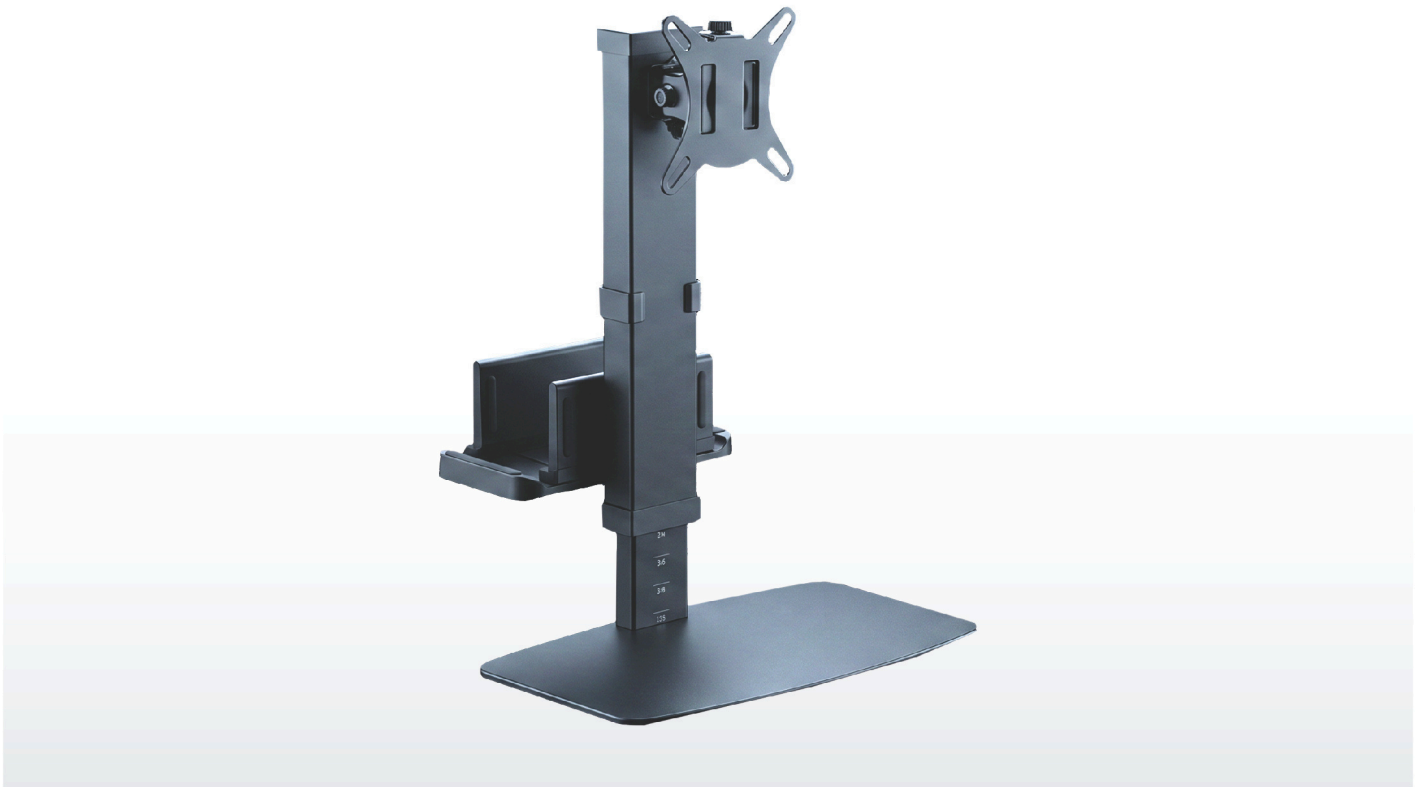


Lift Monitor Stand With CPU Mount

Secure Everything With One Powerful Solution.

The Brateck Vertical Lift Monitor Stand helps improve everyday comfort and productivity by creating a more organized and ergonomic workspace.



Space-Saving Workstation Design

Frees up valuable desk space for a cleaner and more efficient setup.



Stable Monitor Support

Securely holds monitors in place for reliable everyday performance and viewing comfort.



Professional Workspace Appearance

Enhances desk aesthetics by creating a tidy and modern workstation setup.

Lift Monitor Stand With CPU Mount

Secure Everything With One Powerful Solution.

It reduces desk clutter, improves viewing posture, and allows users to work, study, or multitask more comfortably throughout the day.



Features



Ergonomic Vertical Lift Adjustment

Helps users maintain a more comfortable viewing position during long working hours.



Full Motion Viewing Flexibility

Supports tilting, swiveling, and screen rotation for comfortable viewing angles and improved workspace adaptability.



Integrated CPU Mounting Solution

Keeps thin client CPUs neatly secured to reduce desk clutter and improve workspace organization.



Cable Management System

Keeps cables neatly organized and hidden for a cleaner and more professional workspace appearance.

Specifications

Full Screen Size

17"-32"

Color

Matte Black

Material

Steel Black

Tilt Range

+50° to -20°

Screen Rotation

+180° to -180°

Swivel Range

+30° to -30°

Vesa Compatible

75x75, 100x100

Cable Management

Yes

Weight Capacity **CPU Holder*

2kg (4.4lbs)

Height

860mm (33.9)

Dimensions

320x308x375-555mm

Weight Capacity **Per Screen*

8kg (17.6lbs)