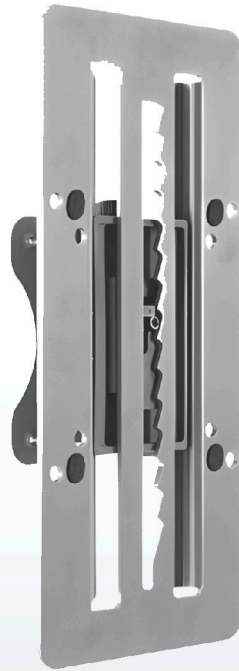


# Steel Track-Mounted Monitor Holder

## Find Your Perfect View.

Promote a space-saving, durable monitor mounting solution for professional workstations, control rooms, healthcare environments, and industrial applications.



### Ergonomic Height Positioning

Enables users to place monitors at a more comfortable viewing level, helping reduce neck and eye strain throughout the workday.



### VESA Compatibility

Works with the most common monitor mounting standards, simplifying installation and upgrades.



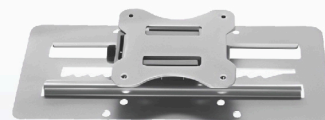
### Space-Saving Workspace Design

Frees up valuable desk space by moving the monitor off the work surface, creating a cleaner, more organized, and productive environment.

# Steel Track-Mounted Monitor Holder

## Find Your Perfect View.

Its sleek metallic grey finish adds a modern, professional touch to any office or home workstation, while the track-mounted design helps maximize desk space and reduce clutter.



## Features



### Up to 8 kg Load Capacity

Securely supports most modern monitors, providing confidence that displays remain stable during daily use.



### Supports 13"-27" Displays

Compatible with a wide range of monitor sizes, making it suitable for every workspace setups.



### Heavy-Duty Steel Construction

Built from durable steel for long-term stability and reliability, even in demanding professional environments.



### Track-Mounted Flexibility

Designed to integrate with wall or workstation track systems, allowing monitors to be repositioned quickly as workspace needs change.

## Specifications

### Fit Screen Size

13"-27"

### Color

Metallic Gray

### Dimensions

115x28x245mm

### Material

Steel, Plastic

### VESA

75x75, 100x100

### Weight Capacity

8 kg (17.6 lbs)